

Concord Coalition to End Homelessness

Calendar Year 2021

# Annual Report



---

## Our Vision

A Concord community where everyone has a safe, decent, stable and affordable place to live.



---

# A Message

## From our Executive Director and Board Chair

Dear friends,

I am honored and excited to present CCEH's Annual Report for 2021. Like everyone else, CCEH faced enormous challenges from COVID-19, but I am both proud and humbled by how our dedicated CCEH staff and our supporters rose to meet the challenge.

You will find in our Annual Report a summary of the work we've done to meet the immediate needs of people struggling with homelessness, while also protecting our clients and staff as best as possible from COVID-19. We know that as long as poverty exists, these services will remain essential and life-saving, and offer people hope in the face of crisis and despair.

But homelessness is a solvable problem, and CCEH is committed to adding Concord to the list of communities across the United States that have ended chronic homelessness! We are sharpening our focus on knowing precisely who is chronically homeless in Concord and what their specific barriers are. At the same time, we are working with partners to create more permanent supportive housing opportunities to reduce the number of people who are experiencing chronic homelessness to zero!

Over the past year, CCEH has established a leadership team who can bring in the resources and do the work that's needed to move our mission forward, including our new Director of Housing Initiatives, Greg Lessard, and our Director of Development, Kait Gallagher. We are poised to take huge strides in ending homelessness in Concord. Thank you for being a part of the solution!

With sincere gratitude,



Ellen Groh  
Executive Director

Dear Community,

In 2021, CCEH took significant, measurable steps towards our mission of ending chronic homelessness in Concord. While there is much more to do to achieve our mission, we are striving to become one of the handful of communities in this country to end chronic homelessness.

Through a robust strategic planning process in the summer of 2021, the Board identified three strategic priorities for the next two years: (1) significantly reduce the number of chronically homeless people in Concord; (2) make sure that people who are homeless or at risk of homelessness have access to the supports and services they need to survive and find stable housing; and (3) increase the organizational capacity of CCEH to advance our goal of ending homelessness. These are our priorities in the short term, but they are stepping stones to ultimately realizing our mission to end chronic homelessness in Concord.

As we look forward, CCEH is in a position to build on our successes. We have established a strong staff and leadership team. We have grown our Board. We have successfully completed the acquisition of several properties in which we have been able to house individuals coming from homelessness and are better prepared to take on the next acquisition. We are also fortunate to have a community that cares about our mission. With your support, we can end homelessness in Concord.

Sincerely,



Ben Folsom  
McLane Middleton, P.A.  
Board Chair

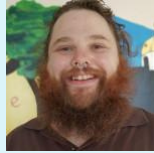


# Staff & Team Members

The awesome people behind this organization



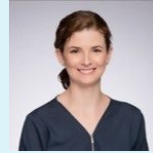
**Iris Altilio**  
Donor Specialist &  
Bookkeeper PT



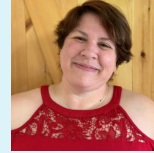
**Tim Devincenzo**  
Resource Center  
Senior Case Manager



**Mark Fagan**  
Chief Operating  
Officer



**Kait Gallagher**  
Director of  
Development



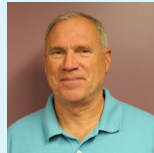
**Amanda Gaskill**  
Housing First Housing  
Stability Specialist



**Teri Gladstone**  
Office Administrator  
PT



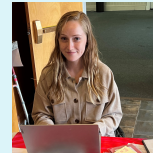
**Ellen Groh**  
Executive Director



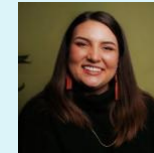
**Greg Lessard**  
Director of Housing  
Initiatives



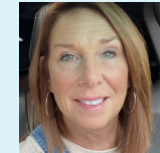
**Maria Richards**  
Resource Center  
Director



**Kyana Shatney**  
Resource Center Case  
Manager



**Connor Spenn**  
Outreach Services  
Coordinator



**Angela Spinney**  
Director of Programs

## Winter Shelter Seasonal Staff

Brian Doyle

Cam Ealy

Jakob Hewitt-Jones

Ashley Langevin

Jon Mathison

Jennifer Moses

Carlos Ortega

Kevin Rodney

TG Royce

Laura Scott

Joanne St. Hilaire

## CCEH Board of Directors

**Benjamin Folsom, Chair**  
McLane Middleton, P.A.

**Michael Leuchtenberger, Vice Chair**  
Unitarian Universalist Church of Concord

**Rob Kleiner, Treasurer**  
Northeast Delta Dental

**Meghan Farrell, Secretary**  
Community Catalyst

**Cathy Battistelli, At-Large**  
Retired, U.S. District Court N.H.

**David Croft**  
Merrimack County Sheriff

**Ann Dippold**  
Dippold & Dennehy Real Estate Group

**Dominic Geffken, M.D.**  
Concord Hospital Family Health Center

**Tim McLaughlin**  
Shaheen & Gordon, P.A.

**Beth Mulleavey**  
Bangor Savings Bank

**Dr. Jim Schlosser**  
Manchester VA Medical Center

**Jay Schumacher**  
Lincoln Financial Group

**Michael Tyrance**  
Community Member

**Miles Whitener**  
Concord Car Care

**In 2021, 147 volunteers donated 2,700 hours of their time to CCEH. We cannot thank each and every one of you enough for all that you do for us!**

*"I want to give back to the people who loved me when I didn't love myself. I want to be of inspiration to others." -J, a CCEH client who is now housed, and who is looking to do some community giveback hours at the Resource Center*







# Paths Toward Housing Solutions

## Ending chronic homelessness in Concord

The causes of homelessness are complex, but it is clear that more affordable housing is critical to meet the goal of ending homelessness.

Vacancy rates for rental units in Concord are below 1% (5% is considered "healthy") and skyrocketing rents are making it impossible for people to find an affordable place to call home. The impact of this shortage is even more devastating for people living on disability income, and who have a history of homelessness.

Working with numerous partner organizations, CCEH is exploring multiple approaches for creating permanent housing options for an estimated 150-175 chronically homeless individuals in the greater Concord area.

With funding from NH Housing Finance Authority, CCEH renovated an office building into four one-bedroom units at our Green Street Apartments. Tenants moved in at the very end of 2020, celebrating New Year's Eve in their new homes.

Our "[Paths Toward Housing Solutions](#)" (available on our website) lays out each of the different approaches, its benefits and obstacles, and the estimated number of people that might be housed with each method. We will keep going until we reach zero chronically homeless individuals!

In 2021, in partnership with other organizations, CCEH helped 22 individuals move out of homelessness and into their own homes.

Once an individual is housed, CCEH is committed to providing on-going case management to help the person stay connected with whatever services they need and stay stably housed.

In October 2021, we purchased a triplex on West Street, using a \$100,000 down-payment we raised through generous donations to our *Safe Spaces II: The Next Step* campaign. Three formerly homeless people were able to move in to their new homes right away!

Ending homelessness in Concord will take a community-wide effort: not just social service agencies, but businesses, government, private foundations, and individuals.

CCEH has gathered an informal "task force" of professionals who are helping with different aspects of the Paths Toward Housing Solutions. We are also working closely with the Steering Committee that oversees Concord's Plan to End Homelessness to bring the right people and agencies together to keep moving forward on that Plan. We know it's possible to end chronic homelessness: it's been done in five other communities in the U.S., and we intend to add Concord to that list!

Our "Housing First Concord" program continues to serve 15 individuals who each rent their own apartment from private landlords in Concord with ongoing case management and rental assistance.



# Homeless Outreach

You cannot solve a problem without first understanding the scope

Creating more housing opportunities is essential, but it won't end homelessness by itself.

We need to know each individual who is chronically homeless in Concord by their name, as well as their particular barriers, strengths, and needs.

When people are in the midst of the trauma of homelessness, they are often hesitant to share information about themselves. It takes time to connect and to build trust. Some chronically homeless individuals are unable, or reluctant, to come to our Resource Center or to other service agencies. Also, many service agencies are stretched to capacity, and data management may get delayed while meeting the immediate needs of their clients.

We are tremendously thankful for generous funding we received in 2021 from an anonymous donor to hire our first Outreach Services Coordinator.

She is working with the outreach staff from other agencies to connect with people at encampments and all around Concord, making sure each person's information is captured in the statewide homeless database.

Working together, we will turn our current estimate of how many people are chronically homeless in Concord into an accurate, dynamic, by-name list.

A by-name list is a critical tool in understanding the impact of our efforts, and adapting our strategies as needed.

Armed with the data, we will continue to collaborate with other agencies on finding, or creating, the housing solutions that each person needs.

Five communities in the U.S. have ended chronic homelessness,\* and they all started with a by-name-list. We are committed to adding Concord to that group of communities!

*"There's this social culture that surrounds homelessness and the people experiencing homelessness. It's so important to be respectful and understanding of that culture so that we can understand the people we're working with, understand the experiences of that culture. People experiencing homelessness are one of the most ostracized, overlooked people, often coming from subgroups of people who are already discriminated against. The outreach work and the services CCEH and our partner organizations offer is caring for and honoring that culture and those individuals as best we can." -CCEH Outreach Services Coordinator*



\*See [Community Solutions](#) website to learn more.





# Overcoming Obstacles



## Your donations make an impact

In 2021, our Resource Center helped 585 people meet their basic needs, including showers, laundry, getting their mail, and case management support to connect with housing and other services.

Our Emergency Winter Shelter gave 190 adults a warm place to sleep from December 2020 to March 2021, with an average of 31 people per night.

*"I always know I have a place I can go to and ask for help. I love the RC and Staff."  
- J, CCEH client*

Every person, every agency, has faced numerous challenges from COVID. Our biggest dilemma was how to provide for social distancing at our Resource Center and Emergency Winter Shelter to keep vulnerable people safe, slow the spread of the virus, and later, how to isolate those who did test positive for COVID.

We jumped on the chance to purchase the First Church building in December 2020, using CARES Act funds. The large space let us maintain our pre-pandemic capacity, so no one would be turned away. Without the First Church building, our Emergency Winter Shelter beds would have dropped from 40 to 20, and our Resource Center capacity would have dropped to serving only 12 people at a time.

Our deep gratitude goes out to the First Church congregation for making the sale happen quickly enough for CCEH to apply for the grant funds!

As crucial as the First Church building has been during the pandemic, we never intended it to be the permanent location for the Resource Center and Emergency Winter Shelter. The utility and maintenance costs on this beautiful building are extremely high, there is extra space that's not easily utilized for our programs, and it is in a residential neighborhood.

We are exploring possibilities to sell the property, with the hope that it could be turned into apartments that would help ease Concord's housing crisis. CCEH would use the proceeds to invest in other permanent housing solutions to end chronic homelessness, like our West Street Apartments. We expect to return the Resource Center and Emergency Winter Shelter to their former locations by spring of 2023.

## Prevention and Isolation Shelter

CCEH hosted four vaccination clinics at the Resource Center, and about 100 individuals were vaccinated! We are continuing to offer these clinics.

For the 2021-2022 winter season, CCEH used our original Emergency Winter Shelter building as a place to isolate any clients who tested positive for COVID. Nine dedicated community members stepped up to staff the isolation shelter on an as-needed basis. We only had to use it once, but it was a relief to have it, and the staffing, available!



# Success Despite the Odds

## Everything's Possible Now

After being a dedicated employee for 18 years, Barry\* became addicted to opioid medications prescribed for his chronic pain. His addiction cost him his job and he spiraled into homelessness. He spent 12 years in Concord living out of his car or a tent, because getting out of homelessness is hard. He just couldn't get his footing, couldn't get ahead. But Barry's health was declining and he needed a safe, stable place to live.

He admits that he's stubborn, and that he was intimidated by all of the paperwork and forms to apply for assistance. And deep down, a part of him felt like after everything he'd done and been through, he didn't deserve a home.

CCEH case managers worked with Barry to help him through numerous applications and paperwork, getting Barry on the list for a housing voucher as well as on Medicaid health insurance. He didn't always make it easy for them, but they persevered for him!

Barry vividly remembers being pulled aside by his CCEH case manager with the news he'd be moving into a new apartment. He cried tears of absolute joy. Until that moment, Barry had resigned himself to the idea that he would be homeless for the rest of his life.

And the move couldn't have come at a better time: Barry was seriously ill, and needed critical medical treatment that he wouldn't have been able to get if he didn't have insurance or a stable home to recover in. He believes that if he didn't have the medical treatment and housing when he did, he very likely would have died in his car.

"There is this veil of hopelessness when you're homeless, there is so much anxiety and fear. But now I see the light at the end of the tunnel, and everything's possible now." Barry is looking towards the future and planning how he can help others who were once like him.

\*Name changed for privacy

## Support for our 2021 Events Raised Over \$100,000 for CCEH Programs



**SouperFest**

SouperFest took place in White Park on a beautiful late-March day.



**Bluegrass BBQ**

Bluegrass BBQ was a wild success, with over 250 walk up orders taken on the day for a total of 550 orders!



**Talent Show**

We continue to be impressed by the incredible talent of Concord's community.

## Save the Dates

**Bluegrass BBQ**

Sat. July 23, 2022

**Talent Show**

Sat. Oct. 1, 2022

**SouperFest**

Sat. March 25,  
2023

Event photo credits to Aaron Baker of Mulberry Creek Imagery. Thank you Aaron for donating your time and talent!

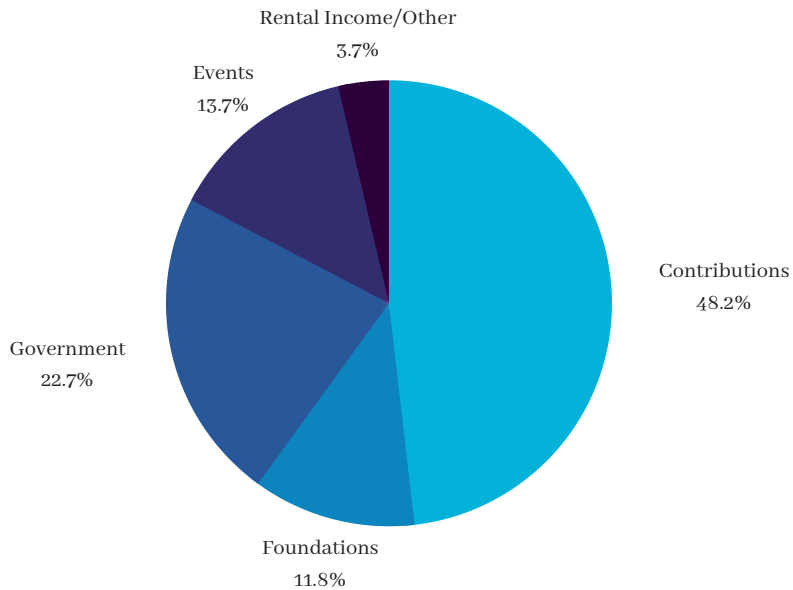
**Generous and passionate volunteers make these events possible: thank you to all of the volunteers who helped at our events in 2021!**



# CCEH Financials

Fiscal Year 2021: July 1, 2020 to June 30, 2021

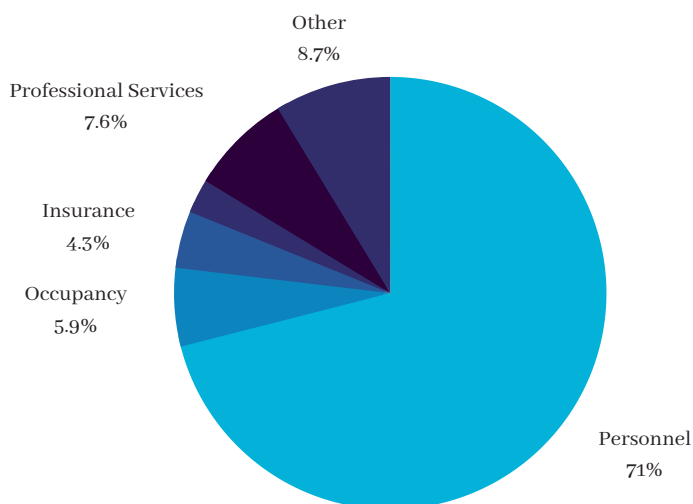
## Recurring Revenues



Contributions	\$455,255
Foundations	111,797
Government	214,314
Events	129,294
Rental Income/Other	34,566
<b>Total</b>	<b>\$945,226</b>

Excludes non-recurring funds for the purchase of First Church and other shelter modifications \$930,363 (CARES Act Funding)

## Operating Expenses



Personnel	\$494,310
Occupancy	40,779
Insurance	29,651
Events & Fundraising	17,815
Professional Services	52,863
Other	60,617
<b>Total</b>	<b>\$696,035</b>

Funds not used for on-going operating expenses were used for permanent housing investments, such as Green Street and West Street apartments.

---

# Thank you

A huge thank you to our generous donors--individuals, businesses, foundations, and others--without whom we could not provide our critical services and programs.



Resource Center guests packing their belongings into their bags for another day.



Our West Street property, currently housing three CCEH clients.



Ellen Groh at our 2021 Talent Show, thanking our dedicated community of supporters.

*"CCEH gave me and my son a new beginning. A stable beautiful home, as well as Case Management to follow throughout the years. They helped us come back from the bottom up."  
-M, a CCEH client who is now housed.*

"We support CCEH for a simple reason: we live in this community. Homelessness is a part of the community, and in a city the size of Concord, there is a real chance to address homelessness, and to end it. Because CCEH provides that chance, and provides services to some of the neediest citizens of Concord, we believe it to be worthy of support."  
-Hansi and Bill Glahn

"It is so important to us that our community move beyond shelter to actual housing for those without, and housing with the supports they need, so that shelters are barely needed and just a placeholder. We believe that all people deserve a home, and supporting the work of CCEH is one great way to help make that happen."  
-Ellen and David Fries

---

# 2021 Supporters

Thank you to all of the supporters, big and small, who gave generously to CCEH in 2021.

## \$10,000 and Above

Anonymous  
Arthur M and Patricia L. Heard Fund\*  
City of Concord  
Granite United Way  
Ken and Ilene Stern Charitable Fund\*  
Lincoln Financial Foundation  
Merrimack County Savings Bank  
Roland and Sharon St. Onge Fund\*  
Rotary Club of Concord  
The Dobles Foundation

## \$5,000 to \$9,999

Ann Hoey and Steve Elgert  
Anonymous  
Bob Mariano Chrysler Jeep Dodge  
Concord Eye Center  
Concord Food Co-op  
Davis & Towle Insurance Group  
Dennis Card and Maureen McCanty  
Dr. Patricia Clancy and Dr. Robert Kiefner  
Gemini Fund\*  
Helen Dutton  
John and Elizabeth McKinney  
John and Rosemary Silverberg  
Michael and Mildred LaFontaine  
New Hampshire Mutual Bancorp  
Northeast Delta Dental  
Trinity Trust  
Wilcox & Barton, Inc.  
William Faulkner

## \$2,500 to \$4,999

Anonymous  
Anne and Clete Baier  
Ben and Andrea Folsom  
Boucher Family Fund\*  
Cleveland, Waters and Bass, PA  
Dominic Geffken and Irene Rainville  
Ellen and David Fries  
Employees of Associated Grocers of NE and AG Supermarkets\*  
Gail R. Page  
Gloria Sinclair  
McFarland Johnson  
Michael and Elizabeth Lenehan

## \$1,000 to \$2,499

AmeriHealth Caritas New Hampshire  
Andrew Schulman  
Anonymous  
Autumn Van Sice and Scott Fabozzi  
Beverly Jean Entwisle  
Blazing Star Eureka Lodge#11  
Brenda Perry  
Brixmor Property Group  
Candace Bouchard  
Carl Cooley and Seddon Savage  
Carol Kosnitsky  
Catherine and David Gruette  
Chappell Tractor Sales, LLC  
Chris and Jaye Duncan  
Concord Female Charitable Society  
Craig Betchart  
Cynthia Sherman  
David and Rebecca Cawley  
Dawn Marie and Larry Haynes  
Deb and Steve Baker  
Dippold & Dennehy Real Estate Group  
Donna Moore  
Dorean Kimball  
Doug and Judy Hatfield  
Dr. and Mrs. Gary and Carol Sobelson  
Eastern Bank  
Episcopal Church of New Hampshire  
FirstTracks Marketing Group LLC  
Frances and Wilber Glahn  
Frank and Debra Boucher  
Granite State Candy Shoppe  
Greg and Donna Lessard  
H.L. Turner Group Inc.  
Hallowell Morrison Fund\*  
Heidi Page  
Hilary Alvarez and Alex Streeter  
J. F. Swope Fund\*  
Jack and Susan Eberth  
James Schlosser  
Janice Metzger  
John and Anne McCausland  
John and Catherine Goegel  
Jonas Aviza and Joellen Aviza  
Joseph G & Jean E. Sawtelle Fund\*

Judith and TJ Whitelaw  
Julie K. Runnells  
Karalynn and Matt Warden  
Ledyard National Bank  
Lee Anne and Timothy Ames  
Leslie and Glenn Walker  
Leslie Fincke and Tim O'Sullivan  
Linda Lorden  
Lon Setnik and Cynthia King  
Mark Zankel  
McLane Middleton, Professional Association  
Modern Woodmen of America  
Mrs. Ruth Perencevich and Dr. Nick Perencevich  
Nancy Fullam  
Naomi Popp  
New Hampshire Food Bank  
NH Automobile Dealers Association  
Oge and Pam Young Family Fund\*  
Parker Education  
Paul and Patti Dann  
People's United Bank  
Phil Wallingford and Kathy Barnes  
Prime Alternative Treatment Centers of NH Inc.  
Robert F. and Marianne Fleischman  
Robert W. and Gladys S. Meserve Charitable Trust  
Ron Bessette and Cathy Battistelli  
Rosanne Haggerty and Lloyd Sederer  
Senator Sylvia Larsen and Robert Larsen  
Shaheen & Gordon, P.A.  
Sheryl Locke  
South Congregational Church  
Sugar River Bank  
Tenley and Peter Callaghan  
The Carol and Timothy Hoyt Charitable Fund\*  
Thomas and Mary Anne Chapman  
Timothy and June Frazer  
Town Fair Tire Foundation, Inc.  
Unitil  
Velma Van Dyke



---

**\$250 to \$999**

Allan Herschlag and Cathleen Furlong  
Andrew Offit  
Ann Rice  
Ann West and Roger Ballou  
Anonymous  
Aries Engineering LLC  
Bangor Savings Bank  
Bar Harbor Bank & Trust  
Barbara H. Wing  
Baron's Major Brands LLC  
Barry Cox and Nancy Kane  
Betsey Neville and Gordon R. Blakeney, Jr.  
Bill and Martha Hickey  
Brackett and Connie Scheffy  
Burger Family Fund\*  
Byron and Susan Champlin  
Calvin Herst and Lauren Ahrens  
Carew & Wells, PLLC  
Carol and Timothy Hoyt  
Carter Hale and Susan Zlotnick-Hale  
Charles and Lynne Morgan  
Checkmate Payroll Services, Inc  
Chris Hallowell and Cindall Morrison  
Christina R. Muniz  
Ciborowski Associates  
Clifford Moran  
Concord Dance Academy  
Concord Imaging Center  
Consolidated Communications  
Craig Landcastle  
Daniel Andrus and Cheryl Moore  
Daniel Luker and Karen Slick  
Darcy Walton  
Darrick Gartley  
David Canfield and Ruth Axelrod  
David Heuss  
David Laflamme  
David Law  
David Ross  
Diane DeStefano  
Donald and Katherine Burns  
Donald Ghelli  
Douglas, Leonard & Garvey, P.C.  
Duprey Companies  
Eastern Propane Gas, Inc.

Edward Hennessy and Harriet Fishman  
Eric E Post  
First Church of Christ, Scientist  
First Congregational Church of Hopkinton, UCC  
Floranne G. Hammond  
Franz Vail and Janet Kelley-Vail  
Freda Spiro  
Gary and Renia Woods  
Generation Farm LLC  
Grappone Automotive Group  
Greater Concord Interfaith Council  
Havenwood Heritage Heights  
Helen and Bob McGlashan  
Holy Trinity Greek Orthodox Church  
Ian and Allison McGregor  
Irish Electric Corp.  
Jack Shields  
James Hunt  
Jeanna Walsh  
Jeffrey Morin  
Jennifer and Brian Roff  
JoAnn Fryer & Rich Rooney  
Jon W. Samaha, DMD MMSc  
Julia Gove  
Juliana Eades  
Kate Steinway and Paul Zolan  
Keeler Family Realtors  
Ken and Ilene Stern  
Kristen Anderson  
Lorraine Koehler  
Laura L. Hall  
Leslie and Scott Bennett  
Liberty Mutual Insurance  
Linda Mattlage  
Lisa A. Merrill  
Logan Snyder  
Lowell Folsom  
Lynne Raleigh  
Maloney & Kennedy, PLLC  
Marcy Stanton  
Margaret and Peter Blume  
Margaret Tomas  
Mark and Betsy Bardo  
Mary and David Ruedig Family Fund\*  
Mary Beale and Sue Fortier  
Melanie Kray

Metzger/McGuire  
Michael and Diane Vlahos  
Michael and Patricia Bourgault  
Michael Poirier  
Michael Wimsatt and Chiara Dolcino  
MicroDAQ.com, Ltd.  
Mikayla Broderick  
Monique M. Dosogne  
Mr. Raymond A. Walters  
Ms. Ingrid J. Marsh  
Ms. Theresa Neves  
Myla Padden  
Nancy Egner  
Nancy Wolcott and Mark Lorenze  
Nancy Wood  
NBT Bank  
New Hampshire Distributors, LLC  
New Hampshire State Society of Medical Assistants  
Nobis Group  
North Branch Construction  
Orr & Reno, P.A.  
Pamela Mosca and Oreste Mosca III  
Paul and Linda Parnass  
Peggy and Tom Herbert  
R & T Electric, Inc.  
Ravi and Joyce Ann Vig  
Resilient Buildings Group  
Rob and Holly Kleiner  
Robert and Gena Cohen Moses Fund\*  
Roland Berube  
Ross Express  
SafeBooks Accounting Solutions, Inc.  
Sally Bird  
Sanel NAPA  
Scott and Claudia Walker  
Service Credit Union  
ServPro of Concord  
Shannon Mills  
Sharon and Richard Treichler  
Sheila and Wade Brown  
St. Andrew's Episcopal Church  
St. Mary's Bank  
Stephen Curtin and Mary Wilke  
Steven and Kathleen McAuliffe  
Steven Winnett  
Strength and Power Massage  
Susan Heinecke

Susan Schibanoff  
Susanne and Roger Desrosiers  
Suzanne Watts  
Tarbell & Brodich, PA  
The Barley House  
The Fischer Family Fund\*  
The River 92.5 FM  
The Rowley Agency, Inc.  
The Works Bakery Cafe  
Thomas O'Brien  
Timothy Pratt  
Triplet Computers, LLC  
Unitarian Universalist Church of Concord  
United Church of Penacook Care Team  
United Way of Massachusetts Bay and Merrimack Valley  
Valerie Hall  
Vera B. Buck  
Virginia Mierins  
Wesley United Methodist Church  
Weston & Sampson Engineers, Inc.  
White Mountain Gourmet Coffee  
William Christie and Cinde Warmington  
William Watson  
Zandra Rice Hawkins

**\$100 to \$249**

Abby Fagan  
Allen and Syril Solomon  
Ameriprise Financial  
Amy Calder  
Andrea Chan  
Andrea Goldberg  
Andrea Macnab  
Anne Tyrol  
Ariana Moir and Stephan Oehler  
Arnold Alpert and Judy Elliott  
Audrey and Donald Moore  
Barbara Cook  
Barbara Fegley  
Barbara J. Black  
Bernadette and Mal Cameron  
Beth and Eric Soederberg  
Beth Blair  
Boris and Maria Bronfine  
Bow High School Teen Advocate Group (TAG)  
Brad Keller

---

**\$100 to \$249 Continued**

Bruce Banks	Helmut Koch	Lisa Ann LaPierre	Robert and Rebecca Maccini
Capitol Paint and Wallpaper	Isobel Yonemura and Jim Moir	Lois Grant	Robert Nerbonne
Carol and Jeffry Schapira	Jack Bopp	Lorna Landry	Robyn Cotton
Carol and Robert Niegisch	Jacki Fogarty	Louise and Byron Carr	Rodney E. Tenney
Catherine Wittliff	James Bomersbach	Lucille Giannone	Rosemary Little
Cheryl and Wayne Johnston	James Guerci	Maggie Fogarty	Sally and Carleton Auer
Chrisinda Lynch	Janet Battista	Manchester Christian Church	Samuel Lovett
Christa Johnson Scura	Janet Zeller	Marc Ferland	Sandra Blanchard
Christine Miller	Janice Watt	Marc Laurin	Sara and Jennifer Smith
Christopher Kane	Jean Brennan	Marie Rose and Winton DeRosia	Sarah Brown
Christopher Moore	Jeanne Barnes	Martha Wagner	Sarah Kelsea
Christopher Soule and Linda Ashford	Jeffrey J. Zellers and Eileen McCarthy	Mary A. Danca	Sean R. Locke
Cohen Steel Supply, Inc.	Jerry and Linda Engstrand	Mary Ann Aldrich	Sheila Rydel
Concord Country Club	Jess Parasco	Mary Davies	Stephen and Barbara Lambert
Cynthia and James Juneau	Jinny Koehler	Mary Kimmel	Stephen Schloz
Cynthia and Robert Burke	Jinny Koehler	Mary Terese Schelble	Stephen Young
Cynthia C. Kurahara	John and Linda Gibson	Maureen Rowley	Stuart Russell
Daniel and Jennifer Carruth	John and Nancy Laboe	Megan Thibodeau	Susan and William Meserve
Daniel Meserve	John King and Brigid McNamee	Melanie Titus	Susan Babine
Daniel R. Schlosser	John Snow, Inc.	Melissa Hinebauch and Matthew Schmitz	Susan W Almy
Dawn McKinney	Jonathan Rheault	Melissa Sullivan-DiNardo	Tamara Krenn
Debra Coe	Joseph and Bonnie Larochelle	Michael and Eileen Gfroerer	Tammy Miller
Debra Ragen-Coffman	Joseph Chateaufneuf	Michael Sheehan	The Lawson Group
Denine Garnett	Judith Lonergan	Miss Polly's Traveling Treats	The Reverends John and Faye Buttrick
Diana Merrill	Judith Rystar	Monique and William Gibney	Turtle Family
Dick and Ann Ludders	Judy Silva	Mrs. Laureen E. Drolet	Warren and Margaret Fargo
Donna E. Rice	Julia Sweeney	Ms. Barbara J. Beelle	William and Helen Fairbanks
Doreen and Aaron Baker	Julie and Michael Connolly	Ms. Chrystal Spofford	William and Jennifer Kretovic
Dorothy Massad	Kait and Craig Gallagher	Ms. Sarah L. Copp	William and Robin Frament
Douglas Crabtree	Karen and Peter McNamara	Nancy Groh and Tony Brown	William Brewster
Dr. and Mrs. James A. Benson	Karen Kimel	Nancy Poor	William Mead
Drs. Lyn and Klaus Lindpaintner	Katharyn and John Hok	Nancy W. Kaplan	William Norton
Elaine Lessels	Katherine and Sol Solomon	Nicholas and Brigitte Holmes	William Politt
Eleanor and Ignatius MacLellan	Katherine Weir and Family	Page Cannon	Womankind Counseling Center
Elizabeth Black and Catherine Menard	Kathleen Beliveau	Paige Williams	
Ellen Groh	Kathleen Blodgett	Pamela Nichols	<b>Up to \$100</b>
Erle Pierce	Kathryn Perkins	Patricia and David Immen	Aaron Fracht Monroe
Erling and Karen Jorgensen	Kerry and George Reed	Patricia Bass	AARP
Felice Burstein	Kevin Moquin	Patricia Doyle	Adelaide Murray
Fox Ace Hardware	Kristin Spath and Thomas Piper	Patricia Uhlig	Alena Leon
Frank and Joyce Lemay	Kurt and Debra Hastings	Paul Belyea	Alexandria Panagiotakos
GFWC Concord Contemporary Club	Laura Milliken	Paul Hauptly	Andy Tabor
Gondwana & Divine Clothing Co.	Laura R Magzis	Peabody-Mt. Washington Chapter	Angela Andrews
Gregory and Patricia Smith	Laura Scott	No. 35, Order of the Eastern Star, Tilton, NH	Angelique Trent
Gregory Kerr	Laurie and Dan Morrissey	Peter LaFontaine	Anita Higman
H. Robert and Jeanne Torpey	Leigh Walls	Physicians of Concord Family Medicine	Ann Waller
Hannaford Concord NH	Leslie Ari	Priscilla Kimball	Anne Funk
Heidi Chaney	Linda and Lawrence Boucher	Riverbend Community Mental Health, Inc.	Anne M. Keach
	Linda M. Quinn	Robert and Juliana Dapice	Anonymous
	Linda Skaggs		Anthony Puntin
	Lindsay Gaskins		Anthony Schinella
	Lisa and Tom Biklen		Arlene O'Connor
			Ashley Poulin

## Up to \$100 Continued

Anonymous	Denise Desrosiers	Jennifer Galbraith	Lorna and Alfred Patey
asSYSter, LLC	Designs by Connor Sperrn	Jennifer Marsh	Lucinda Reid
Audrey Trace	Dianne Carpenter	Jennifer Rein	Lynne Kirila
Bartholomew Defina	Dianne Perkins	Jessica West	Lynne Sabeau
Benjamin Fagan	Dina Chaitowitz	Jill E Markert	M.J. Perron
Betty Nitchie	Donald and Mary Hayes	Jim Clapp	Margaret and Michael Knoras
Bonnie Fore	Donna Cunningham	Jim Miller	Margaret Donohue
Bonnie McNutt	Donna Evans	Joan Goshgarian	Marianne Abany
Bryanna Marceau	Donna Mailhot	Joan Thurston	Mark and Linda Hodgdon
Brynn Olin	Doris and Mark Hampton	Joanne Magarian	Mark Schiewetz
Brynnalee Simmons	Dr. Judith Fillion	John Hamilton and Krista Helmboldt	Marsha Gove
Cameron and Joan Borton	Eden Yoga	John Kelly	Mary C. Evans
Carol Hovey and Timothy Wildman	Edna Elle	Joseph Linquta	Mary J Bailey Snider
Carol Kilmister	Edward and Claudia Damon	Joshua Hardy	Mary McGowan
Carol Lizotte	Edward Hoen	Joyful Joeys Clowning Ministry of Havenwood Heritage Heights	Mary Shea
Carol R. Gulla	Eileen H. Fagan	Judith and John McPhail	Mary Watt
Carol Wiater	Eleanor C. Stokes	Judith Stone	Maryevelyn Monty
Caroline and Jonathan Smith	Eliot Sands	Julianne Gadoury	Mathew Bose
Carolyn Maloney	Elissa Margolin	Julie Courtney	Matt Leahy
Chantal Mcguire	Elizabeth DePerry	June Tillotson	Matthew Hanson
Charles Petalas	Elizabeth Thompson	Karen and Stephen Moore	Maureen Kelly-Ellermann
Charlotte Cross	Ella Butler	Karen Braz	Melissa McAllister
Cheryl Meachen	Ellen Nunes	Kate Atkinson	Michael and Bethany McKilen
Chris O'Connor	Elm Brook Village Cooperative, Inc.	Katherine Merrow	Michael and Fiona Wilson
Christina Warriner	Emily Bogle	Kathleen J Daniels	Michael Arvenitis and Alfredo Rossi
Christine Iozza-Lukkes	Ernesto Burden	Kathleen Rothschild	Michael Laviolette
Christine Madden	Femm Singer	Kathy Kilfara	Michelle R. Story
Christy and Peter Bartlett	Fran Philippe	Katie Cross-Powers	Ms. Gail R. Matson
Chuck Mills	Fred Wilcox	Ken Harrison	Myla and Richard Crouse
Clare O'Grady	Gail and Gary Gordon	Kenneth Koerber	Nancy A. Wilson
Claudia Rein	Gail Hammond	Kerry Coffin	Nancy A. Guilbault
Cody Jacobsen	Gail Magan	Kim Gillis	Nancy and Thomas Polep
Colleen Casey	Gayle Denningham	Kimberly Dionne	Nancy Carlisle
Colleen Chausse	Gloria and Jeffrey Andrews	Larry Gammon	Nancy Godin
Colleen Tewksbury	Gretchen Coughlin	Laura Fry	Nancy Wright
Concord School District	Gyme Hardy	Lauren Savage	Natasha Dube
Cornelia Sheridan	Hannah Hamel	Laurie Doucet	OneHope
Cynthia Forcier	Hillary Pincoske	Laurie Hart	Paige Cordell
Dana L. Cudworth	Hong Lu	Lawrence Bickford	Pam and Oge Young
Daniel Kossick	James Barker	Lea L. Sabeau	Pamela Kenison
David and Lindy Keller	James Gerraughty	Liana and Matthew Pennington	Patricia and David Fesette
David and Michele Holbrook	James Kruse	Linda and Mark Johanson	Patrick LaFave
David Garcia	Jamie Heminway	Linda Graham	Pattu Pillai
Daymon and Rita Murdough	Jane and Clint Cogswell	Linda Newell	Peggy Scott
Debborah Kaitz	Jane Goodman	Linda Williams and Robert Williams, Jr.	Peter and Amy Bourgeois
Deborah Anne Wyman	Janet Bourne	Lindley Kinerk	Peter Brankman
Deborah Carley	Janet Casey	Lisa Irwin	Positive Energy Fitness and Health, LLC
Deborah Dearborn	Janet Kibbee	Liz Coll	Randall S. Elliott
Deborah Henry	Janice Dutton	Lon Siel	Raymond Chase
Deborah Schachter and Tom Bunnell	Jeanne Ann Whittington and James Halla		Reverend Celeste McQuarrie
Debra Curtis	Jeannie Berger		



## Up to \$100 Continued

Richard and Bonnie St. Lawrence  
Richard de Seve and Susan Hale-de Seve  
Richard Nelson  
Robert and Hannah Anderson  
Robert Paradis  
Robert Samson  
Ron Montmagny  
Rose Marie Joly  
Roxanne Marsh  
Ruth and Gregory Heath  
Ryan Hvizda  
Sally Ridgwell  
Samantha Chickering  
Sandi Jones  
Sandra Frades  
Sandra Hillsgrove  
Sandra Weld  
Sara Norberg  
Sarah Johnson  
Sarah Ohl  
Sarah Taylor-Black  
Senator John Reagan  
Shaw's  
Silvia Styles  
Stefanie Fredette  
Stefanie Phillips

Stephanie Lewis  
Stephanie Parkinson  
Stephen and Deborah Sanborn  
Steve David  
Steven Varnum  
Susan DeForest  
Susan Dexter  
Susan Fass  
Susan Samiljan  
Suzanne Winchester  
Tara Reardon  
Terry Sturke and Tom Bell  
Theresa Groves-Royce  
Thomas Walter  
Tim and Pam Neville  
Tina Smith  
Udo and Linda Rauter  
Victor Valdes  
Wanida R. Rotprad Pinard  
Weare Monthly Meeting of Friends  
Webster Davis  
Wendy Lapham  
William and Margaret Fletcher  
William Farquhar  
William Hocking  
William R. Hauser

If you believe we have made any errors in this list, please contact Kait Gallagher at [kaitgallagher@concordhomeless.org](mailto:kaitgallagher@concordhomeless.org) or 603-801-5102.

A special thank you to all of our supporters who donated in-kind gifts, whether items for our Resource Center and Emergency Winter Shelter, or their time and expertise on our committees or projects: thank you so very much for your generosity!



# Partnerships & Collaborations

Arches of Support are organizations that provide recurring grant funding to CCEH, or provide invaluable in-kind services at levels of \$10,000 or more.



\*A grant made possible by gifts from the following funds: Capital Region Community Fund, John W. Hart Memorial Fund, Ruth Pillsbury Holman Needy Fund, and the Stephen W. and Lucy H. Winship Fund for the Capital Region.

Pillars of Support are businesses and organizations that believe ending homelessness in our community is a top priority. They lend their voice to the issue of homelessness and commit to sponsor at least two of CCEH's annual fundraising events in a year. Premier Pillars of Support commit their support for a three-year period.

AmeriHealth Caritas NH\*\*  
Associated Grocers of New England  
Barley House\*\*  
Binnie Media  
Bob Mariano Chrysler Dodge Jeep Ram  
Chappell Tractor  
CheckMateHCM Solutions\*\*  
Cleveland, Waters and Bass, P.A.\*\*  
The Common Man  
Concord Food Co-op  
Concord Eye Center  
ConcordTV  
Davis & Towle  
Northeast Delta Dental  
Dippold & Dennehy Real Estate Group\*\*  
Eastern Bank  
Eastern Propane & Oil  
First Tracks Marketing Group\*\*  
Franklin Savings Bank  
Generation Farm  
The Hawk & Lakes FM  
Greater Concord Interfaith Council  
Keeler Family Realtors\*\*  
Kearsarge Area Chamber of Commerce\*\*  
Ledyard National Bank\*\*  
McFarland Johnson  
McLane Middleton, P.A.

Merrimack County Savings Bank\*\*  
Metzger/McGuire\*\*  
MicroDAQ LLC  
Mulberry Creek Imagery  
New Hampshire Automobile Dealers Association  
Nobis Group\*\*  
North Branch Construction  
Parker Education\*\*  
Premiere Properties  
Purple Finch Productions  
Resilient Buildings Group  
the river - FM 92.5  
Ross Express  
The Rowley Agency, Inc.  
Ruedig Realty  
ServPro Fire & Water Cleanup & Restoration  
Shaheen & Gordon  
South Church Concord  
Sugar River Bank\*\*  
Twisted Vine Events  
Unitarian Universalist Church of Concord\*\*  
Vintage Kitchens\*\*  
Warrenstreet\*\*  
Wilcox & Barton\*\*  
WKXL NH Talk Radio  
99.7 WNTK-WUVR News-Talk

\*\*Premiere Pillar of Support

---

# Ways of Giving

Our donors give in so many different ways, and we are so appreciative of their gifts.

Make a cash gift. You can give online at [concordhomeless.org/donate-now/](https://concordhomeless.org/donate-now/) or send a check to CCEH, PO Box 3933, Concord, NH 03302-3933.

Become a Sustaining Donor by contributing on a monthly basis online or by check.

Make a contribution or memorial gift in honor of a loved one or friend.

Join our Legacy Society by including CCEH in your will or living trust.

Donate appreciated stock, make a qualified charitable distribution, or give through a donor advised fund.

Encourage others to support us, including companies and businesses.

Volunteer at our Resource Center, Emergency Winter Shelter, at our events, or on a committee.

**There are many ways in which you can make an impact.**

For more information, please contact Kait Gallagher, Director of Development at [kaitgallagher@concordhomeless.org](mailto:kaitgallagher@concordhomeless.org) or 603-801-5102

## Together we will end homelessness!

If you haven't already, join our email list and get the latest news on CCEH's efforts to end homelessness. [Head to our website to sign up.](#)



This document was designed for free using Canva Pro for Nonprofits.

Concord Coalition to End Homelessness is an independent, nonprofit 501c (3) charitable organization  
(tax ID # 26-3933990).